

NorthStar Exposure Tracking

DO YOU KNOW?

What is your current security posture today? Do you know how it compares to last month, last quarter or even last year?

While most tools on the market focus on a single dimension such as missing patches, vulnerabilities, or configuration management, they only give you a narrow view of your exposure. You should not have to flip between two, three or even seven different systems to try to piece together a complete view of your environment.

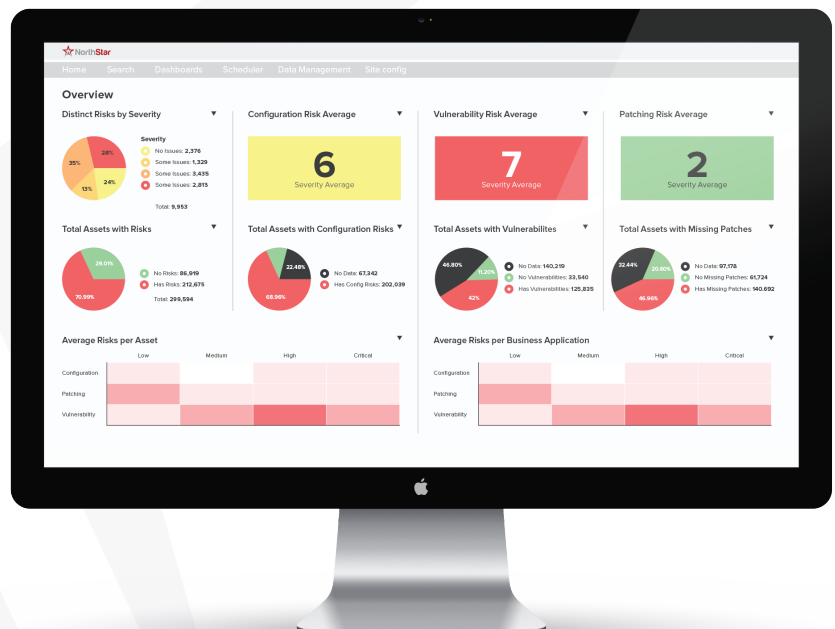
NorthStar provides the visibility you need to better understand and reduce risk by giving you a multidimensional view of all exposures in your environment in a single, easy-to-configure platform. You no longer need to look across multiple products. NorthStar does it all for you.

ONE PRODUCT, MULTIDIMENSIONAL VIEW

Offered as an add-on to the Asset Tracking module, NorthStar Exposure Tracking creates a single, comprehensive and accurate list of all vulnerabilities, missing patches, and misconfigurations across your entire environment in a single pane of glass.

NorthStar is completely customizable to your business needs, giving you the opportunity to get creative with the data sources you choose. It taps into not one or two data sources, but intelligently pulls data from your existing sources across multiple platforms-assembling all the facts you need to make informed decisions on your security posture.

You can define what you consider a risk to your business by adding items such as too many elevated privileges or missing security agents, allowing you to get creative with how that data is leveraged.



REDUCE THE ATTACK SURFACE

After consuming risk data from numerous sources, NorthStar reconciles the exposures across your entire environment and presents responsive and robust visualizations of that data. NorthStar shows you which assets are missing critical patches or affected by a particular CVE, and continually tracks changes to that data over time for trending analysis.

Unlike traditional vulnerability or patching reports, NorthStar benchmarks the data against a comprehensive Asset SuperList. The Asset SuperList gives you complete insight to identify what your exposures are and where they are located, how they are being affected, and most importantly, the elements of your environment missing entirely from your security tools. You don't know what you don't know, but NorthStar does and will show you.

With the continuous and automated visibility NorthStar provides, you can prioritize action and improve your time to remediation to effectively reduce your attack surface.

Search CVE IDs

Search Criteria

General

CVE ID: Contains

CVSS Base Score: Contains

Summary: Contains Poodle

Search Results

CVE ID	CVSS Base Core	Published Date	Details
CVE-2014-3566	4.30	2014-10-14	View
CVE-2014-8730	4.30	2014-12-09	View
CVE-2014-2774	4.30	2016-04-07	View

Risk CVE: CVE-2014-3566

General	Details	Instances	Vulnerability Intelligence		
Assets	Search Results				
Business Apps	Major Type	Minor Type	Major OS	Minor OS	Total
	Computer	PC	Windows	Windows 10	26
	Computer	PC	Windows	Windows 7	4963
	Computer	PC	Windows	Windows 8	20
	Computer	PC	Windows	Windows Other	2
	Computer	PC	Windows	Windows Server 2016	1
	Computer	PC	Windows	Windows Vista	1
	Computer	PC	Windows	Windows XP	70
	Computer	Server	Linux	Ubuntu Linux	2
	Computer	Server	Windows	Windows Server 2000	1
	Computer	Server	Windows	Windows Server 2008	3
	Computer	Server	Windows	Windows Server 2012	1

Risk CVE: CVE-2014-3566

General	Details	Instances	Vulnerability Intelligence
General	Published Date: 2014-10-14	Modified Date: 2017-01-02	CWE ID: CWE-310
	Security Protection: CVSS Base Score: 4.30	CVSS Access Vector: NETWORK	CVSS Access Complexity: MEDIUM
	CVSS Authentication: NONE	CVSS Confidentiality Impact: PARTIAL	CVSS Integrity Impact: NONE
	CVSS Availability Impact: NONE	Summary: The SSL protocol 3.0, as used in OpenSSL through 1.0.1i and other products, uses nondeterministic CBC padding, which makes it easier for man-in-the-middle attackers to obtain cleartext data via a padding-oracle attack, aka the "POODLE" issue	

CAPITALIZE ON YOUR INVESTMENT

Technology is an investment – a large one at that. We can ensure your data is comprehensive and accurate without deploying new agents, because we are leveraging data that already exists in the security and enterprise tools deployed in your environment – ultimately, maximizing the ROI for each of your existing tools.

Best of all, NorthStar's enriched data can be automatically exported to enhance the efficacy of your existing security tools – whether it is providing asset data to your SIEM, configuration data to your GRC, items for remediation to your ticketing system, or populating asset records or fields in your CMDB.



KNOW WHAT YOU'RE PROTECTING